

VILLAGE VOICE

BRINKLEY.....BURROUGH GREEN.....CARLTON.....WESTLEY WATERLESS

MARCH 2024

QUIZ NIGHT



FRIDAY, 15th MARCH

7pm for 7.30 start



BRINKLEY MEMORIAL HALL

A £15 donation, to include a supper of chilli followed by sticky toffee pudding, veggie option Tables of 6. If you can't get a table together, come along anyway and join other stragglers. & RAFFLE Please phone or message Franca on 07765 435776 to book your slot.

In aid of Brinkley Memorial Hall upkeep.

BRINKLEY COFFEE AND CAKES

MONDAY 11th & 25th March 2024

10.30 am to 12.00 noon

at

Brinkley Memorial Hall



Please join us for Tea, Coffee and Cake and an opportunity to catch up with old friends and meet new ones.
ALL WELCOME

ANY QUERIES: CAROLINE EGAR - 01638 507418
07976 250961

Burrough Green Primary School PTA Community Events - Friday 22nd March

BAG2SCHOOL- Collect up all your unworn clothes, and clear your wardrobe and make space after winter. Donations of clothes, curtains, bedding, soft toys and paired shoes please. Please drop bags into school prior to the morning of 22nd March in readiness for collection, or email bgpyachair@gmail.com and we can arrange to collect the bags for you.

Burrough Green Primary School PTA is hosting a fun evening of Bingo at the school with PIMP MY FISH in attendance with their delicious food for all to enjoy. The PTA welcomes all the local community, we look forward to seeing as many of you there as possible. £6 a player with great prizes up for grabs. All proceeds to Burrough Green Primary School.

Even if Bingo is not your thing, please order and enjoy some of PIMP MY FISH's award-winning food creations, who will be in the carpark of the school during the evening.

Food available from 5pm-8pm, please order directly with PIMP MY FISH <https://order.pimp-my-fish.co.uk/> Doors open at 6pm; Eyes down at 6.30pm

'BRUSH UP BRINKLEY'

Very many thanks to all those who helped to keep all the paths and verges of Brinkley so smart!

Please keep it going!

MOBILE LIBRARY



The Mobile Library will be at BURROUGH GREEN by the BUS STOP on 3rd THURSDAY of each month at 3.50 - 4.10pm

BRINKLEY Memorial Hall on the 4th THURSDAY of each month between 1.10pm - 1.50pm.

They stock a great selection of books for all ages, plus NHS hearing aid batteries. They can even check and replace the ferrules on walking sticks.

Make use of this wonderful resource.



BRINKLEY MEMORIAL HALL AUCTION

of Antiques and Household goods on Saturday 13th April 2pm

Viewing Friday 12th April 5-8pm and on morning of sale 10am-1pm
Time to have a spring clear out.

We are looking for household items such as furniture, paintings, china and toys and items for the garden.

We are asking you to give items to be sold on a 20% commission, 50:50 basis or 100% donation.

Contact Mathew or Susie Shuter on 01638 508729 or 07836656643 or email sshuter23gmail.com for more details.



BURROUGH GREEN CHURCH FETE SUNDAY 9TH JUNE 2024

Next Planning Meeting - Wednesday 6th March at 7pm at The Hall, Church Lane, home of Lucy and Peter Talbot

PLEASE come and help plan if you have any thoughts or ideas. We are always trying to think of new games and side shows and everyone is welcome!

25% will be donated to a charity or organisation who help and support us.

Do join us at the meeting or get in touch if you can manage a stall on the day, we provide everything you need!

We need donations for the silent auction so if you can offer anything for this we would also be very grateful.

Thank you,

Lucy on 07910 158463

email peterandlucyt@btinternet.com



All are welcome

to a service of prayers, music and reflections for Peace

Written by women of Palestine



Friday 1st March

12 noon

Followed by a free, light lunch
Contact: Rachel 07765 304013

Christchurch Methodist & URC



NEWS FROM THE ELLESMERE CENTRE

New to the Ellesmere on Saturdays and Sundays

Fluffy Paws Pet Grooming

Please call Sugi on
07707538861

Seniors Table Tennis

Thursdays 7.30pm -9.30pm Men Only
Fridays 1-3pm Mixed
All Welcome

Walking for Health

Every Thursday (weather permitting)
Meet at the Ellesmere at 2pm
Back for a hot drink and a biscuit afterwards
Please contact the office for more details

Chair Yoga

Friday Mornings from 10-10.45am
Contact Nicole **07508025941**

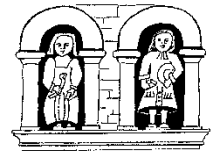
Follow us on Facebook or Twitter
@CentreEllesmere

Email: office@ellesmerecentre.org.uk -alternatively
call us on 01638 508212

GAMES EVENINGS

Sheriff's Court in Burrough Green are hosting Games Evenings every Tuesday evening from 7pm. Come along and play Scrabble, Rummikub, Upwords, Boggle or Mahjong for example. No expertise required. Tea & biscuits included. £2
ALL WELCOME

BURROUGH GREEN SCHOOL NEWS



Hello again. I hope this edition finds you all well and happy. The weather has been miserable (unless you are a duck) throughout January, but there are clear signs that it is beginning to turn - my car thermometer on the way home last night read 15 degrees - pretty warm for 7.45pm on a mid-February night!

As always, we offer incredible staff to pupil ratios here at Burrough Green and the children really do benefit. The Year 6 children, for example, are in a class of 14 for their English, reading and maths lessons - I have certainly never worked in a school where children have opportunities like this. It truly is an amazing place.

Academisation - Questions answered

On the 24th January, Alison Anderson - CEO of ACT, the academy we are joining - answered questions from parents regarding academisation. The minutes of this meeting have now been ratified and I can share them with you all - they will also be appearing in various village publications in the future. These minutes come straight from our governing body

Will the Trust have more influence over the curriculum?

As an Academy, the school won't have to follow the National Curriculum but will have to prove that its curriculum is achieving what it is intending. The National Curriculum doesn't actually give much information or direction so lots of schools are designing their own curriculums already, as long as they meet the requirements of the National Curriculum. Lots of MATs will apply the same curriculum to all of their schools or for particular subjects but ACT doesn't do that. The Trust Board will review the strengths and advise if necessary but as long as it is achieving what it is supposed to, the curriculum will remain in place.

Will the PTA funding get pooled by the Trust?

No, the PTA will keep all of the funds raised for the school. It will have to be accounted for and audited but doesn't go to the Trust for pooling.

How does the Trust funding work?

The Trust will eventually "top slice" the funding - this is where some of the school's funding is given to the Trust to pay for centralised services. "Back office" functions such as HR, Finance, IT, Estate Management and Liability etc. will be centralised at the Trust so the headteacher can focus on the educational purpose of the school.

Are Academies proven to perform better than non-academy schools?

Performance comes down to how a school is led and the support it gets from the Local Authority, which is dependent on their capacity. A Trust has to report on all of the schools within the MAT and oversee the

running of them all, which means they must know each school very well. Being part of a Trust will give the school more support and a team to rally round it through challenges. It's more challenging relying on the Local Authority as their resources are very stretched.

This is an opportunity to share resources, strengths and ideas amongst a family of schools, and to shape an emerging Trust.

Will different teachers be teaching or moving classes?

Within the Trust, some teachers are centrally employed but at Burrough Green teachers can work at the school they have chosen, which is Burrough Green. There will be more opportunities for enrichment across the schools as teachers will be able to work together. For example, whole year groups across the schools could get together, or schools within the Trust can compete against each other in sports etc.

Often small schools don't have enough children to get a team together, but this can be different when working across a group of schools. It won't always be the small schools which have to travel out. Burrough Green has fantastic facilities and it is a great opportunity to share this with other schools.

Day to day, the children won't notice the change as the teaching will be the same, but there will be greater enrichment opportunities for them in the classroom, e.g. using technology to connect the children to those at other schools or learning about the geography and environment of the other schools.

Will the school have an input into its future?

There is a scheme of delegation which determines responsibility and authority within the MAT. Members of the Trust have ultimate responsibility, and then the Board of Trustees are like the governing body but at Trust level and have rules they have to follow that are set by the government. Day to day oversight is delegated to the Local Governing Body and there will be regular meetings between the Trust and LGB to review how the school is doing.

Headteachers across schools will also meet and there is a mechanism to give feedback to the Trust Board to shape what is happening.

Is there a way a school can extract itself from a MAT?

It is very difficult for this to happen. As a Church school, the final decision is with the Bishop, and currently their opinion is for Church schools to join a MAT. There are lots of legal intricacies around it as the MAT is a legal entity. The only other circumstance would be if the Trust is failing the school and the DfE steps in and removes the school. The school would then be placed in a different MAT. Being forced to follow set schemes can also happen to any school, not just those in an MAT.

The decision to join ACT was made with the reasoning that Burrough Green could maintain its identity and

still have a voice, which is what will continue. There will always be change in the future but joining ACT gives us many opportunities. A lot of work has gone into considering options and making the decision, plus the further work around the legalities of the buildings and estates, but throughout the process, Governors have maintained that the school will be able to keep its identity.

Will the Ethos and Values of the school stay the same?

Yes. If the ethos and values of the school align with those of the ACT, they will not change. They were developed by the school and its community who know it best and so it's really important that this continues. Governors are incredibly passionate about the school and its identity. Academisation was turned down several years ago because it wasn't the right fit but now, ACT gives the school the best chance of support and of maintaining its identity.

There were no further questions.

If anybody out there has any more questions, please send them into me and I will endeavour to answer them for you - either immediately or I will find out.

Larks and Owls

More and more parents are continuing to use our new wrap-around-care service. There are places available for all days and we always take late bookings as we appreciate that life throws us a curveball now and again. This half term, Larks and Owls have been entering the children into a range of writing competitions. The children are loving it and have produced some incredible work. Here is a poem written by Lucy Godden (Year 6) that will be entered into a competition:

What Would Peace Look Like?

Would it look like a warm summer's day?

Would everyone be my friend?

Would everyone be on trend?

Would boats only be used for pleasure, not escape?

Would everyone care?

Would the world just be fair?

Would climate change be over?

Would the police only give directions?

And have no need for corrections.

Would every war finally cease?

Would age be respected?

Would disabilities be accepted?

Would we all call time on crime?

Would world hunger end?

Would relationships mend?

Would I watch the news without sadness?

Would it be a world without madness?

Lucy - Year 6

I love this poem. I have read it so many times. Congratulations Lucy, and I hope it does well in the competition.

To remind you all, morning sessions (Larks) run from 7.30am - 8.45am and evening sessions (Owls) run from

3.30pm to 6pm (even on a Friday, as this is a day many schools will offer a reduced service) - this is much later than local schools offer and has been a real game-changer for working parents. The service is now open to rising 5s - those children in the final year of playgroup or nursery before 'proper school' starts - I'm sure the current customers of Burrough Green Playgroup will be pleased to hear this!

BMX

On Monday 12th February we had an inspirational visitor - Mike Mullen - 2 times world BMX champion and multiple X Games gold medallist (the X Games is like the Olympics, but for extreme sports!). He spent an hour with each KS2 group and he taught them how to ride a BMX as well as a few tricks and jumps.

The children I asked said that they loved doing it and that it was so much fun. As you will know from last week's newsletter, BMX is now a certified Olympic sport and the children now have another reason to engage with this summer's spectacular (the second being Jordan Catchpole in the Paralympics).

Mike completed his visit by leading a whole school assembly, where he talked quite inspirationally about 'Flarning' - the idea of having to fail to learn. He completed the assembly, by doing yet more tricks in the hall, culminating in a jump over myself and Mrs Chubb - of course the children loved this and I can confirm that no teachers were harmed in the process! All of this was organised by Mrs Moxom and the whole school would like to thank her for her efforts. She has organised so many things for the children this year - Olympians, pop bands and now BMX. Thank you.

Maths

On Thursday 8th February, parents from KS1 and Reception came into school to learn about all things maths. Under the excellent leadership of Angela Harris, the parents learnt much about how mathematics is taught and how best to help their children at home. The programme says the following: 'Mastering Number is a programme introduced by the NCETM (National Centre for Excellence in the Teaching of Mathematics). The programme secures firm foundations in the development of good number sense for all children from Reception through to Year 1 and Year 2. The aim over time is that children will leave KS1 with fluency in calculation and a confidence and flexibility with number. Attention will be given to key knowledge and understanding needed in Reception classes, and progression through KS1 to support success in the future.'

The event was really well attended with over 20 adults showing willing. An incredible adult turnout. The session in the hall was followed by parents experiencing a maths lesson with their children. Weekly tasks will go home to embed and establish these methods. There is a 'home diary' to be completed and returned to school so that a new pack can then be sent out.

Safeguarding/Well-Being - Anxiety in Children

Everybody (including children) gets anxious - some children experience this feeling more than others and children's triggers are all different. Feelings that they experience can include: feeling tense, nervous or unable to relax. They may have a sense of dread over certain situations or simply fearing that the worst is going to happen. Left untreated, or not acknowledged, any type of anxiety can make it difficult for children to get schoolwork or homework done. It can certainly affect relationships with their peers and teachers.

In the worst cases, students with anxiety disorders miss a lot of school days - or they may avoid school altogether. Currently **our website** carries a 'children's mental health' tab. It has some basic information about anxiety and worry on it, as well as some (3) activities to try. The NHS website also has excellent information on children's anxiety.

New Website

Our new school website went live on Monday 18th December - it has taken a while to update all the pages, add new ones and ensure the curriculum content is where we want it to be. Please remember that it is always a work in progress and is meant to inform parents, the community - in fact, anyone who is interested about what is going on and what to expect at Burrough Green. There is a lot of information on there and if, by chance, you cannot find what you are looking for, please contact the office and I will sort things for you.

As ever, we have space in all classes and I would be delighted to show anyone around our rapidly improving school - including a functioning swimming pool!

With the minutes from our academisation meeting, this is a bumper issue, so I will stop here!

Please, please take care and look after yourselves.

Kind Regards

David Sandford

Headteacher

~~~~~  
**BALSHAM PICTURE HOUSE**

**BALSHAM PICTURE HOUSE**

MAESTRO tells the complex love story of Leonard and Felicia, a story that spans over 30 years from the time they met in 1946 at a party and continuing through two engagements, a 25-year marriage, and three children.

This Oscar nominated film chronicles the lifelong relationship of conductor-composer Leonard Bernstein and actress Felicia Montealegre Cohn Bernstein

Stars include: **Bradley Cooper, Carey Mulligan, Matt Bomer**

**MAESTRO**

**Saturday March 2<sup>nd</sup>**

BALSHAM PICTURE HOUSE



**KNIT & NATTER**

Every Monday from 1:30 to 3.30pm  
In the Community Room at Sheriff's Court Burrough Green. All knitters or potential knitters are welcome,



Bring your own knitting or we can teach you to make squares for the local neonatal unit or knit for other charities. We have odd bits of wool, patterns and needles etc. There will be a small charge for refreshments.

Any donations of wool would be greatly appreciated.

ALL WELCOME

~~~~~  
VILLAGE HALLS

Brinkley, Burrough Green and Westley Waterless have excellent village halls, all beautifully refurbished over the last few years; and all available for hire at reasonable rates.

Information on their facilities and availability can be found by contacting them on:

Brinkley Memorial Hall - Contact: Susie Shuter on
01638 508729 : 07836 656643

Burrough Green Reading Room - Please contact
Joanne Harrison on 01638 508888
E mailing bgreadingroom@yahoo.com
www.burroughgreenparishcouncil.org.uk

Westley Waterless Village Hall - For more
information please go to
www.westleywaterless.com/hall

~~~~~  
**BOOK AND JIGSAW EXCHANGE**

Please pop into the church porch to use the book and jigsaw exchange.

Feel free to borrow a book or jigsaw and return it when you have finished or replace it with another.

Donations of clean, readable modern or classic novels and auto/biographies would be greatly appreciated.

Complete jigsaws only please. Any questions please email [denisehrebeniak@yahoo.com](mailto:denisehrebeniak@yahoo.com)

~~~~~  
VILLAGE WEBSITES

www.westleywaterless.com
www.burroughgreenparishcouncil.org.uk
www.brinkleyparishcouncil.org.uk
carltoncumwillinghampc.org.uk

Information on the facilities of each village and also back issues of Village Voice newsletter and the adverts.

~~~~~  
You are invited to

**DULLINGHAM FLOWER CLUB**

Tel: 01638 507658 or 07786 817154

**DATE FOR DIARY**

Next Meeting - Thursday 14<sup>th</sup> March  
Demonstration by Crystal Dyball

**RECYCLING**

**Carlton & Willingham Green - Wednesdays:**

Black bin - 6<sup>th</sup> & 20<sup>th</sup> March.

Blue - 13<sup>th</sup> & 27<sup>th</sup> March.

Green - 13<sup>th</sup> & 27<sup>th</sup> March.

**Brinkley, Burrough Green, Westley Waterless -**

**Mondays:**

Black sacks weekly.

Blue Lid - 11<sup>th</sup> & 25<sup>th</sup> March.

Green Lid - 4<sup>th</sup> & 18<sup>th</sup> March.

~~~~~  
Peter & Ruth Lloyd Trust

FINAL CALL - applications for pupils starting university in September 2023. Normally one scholarship is awarded each year to the amount of £1000. Broadly speaking the degree course should be from one of the following: - Architecture, Engineering, Geography, History, Law, Mathematics, Sciences, Education, Medicine, Nursing and Veterinary Medicine.

The applicant should be living in one of the parishes bordering the old RAF Wrattling Common airfield - Great & Little Thurlow, West Wickham, Carlton cum Willingham, West Wrattling, Weston Colville and Withersfield. The award is intended to be of assistance in the purchase of books, materials, equipment etc. The final decision and award will be made immediately after 'A' Level results & University offer are confirmed.

For further information about the trust and award please contact: Jonathan Drury 01223 290087

For an application form please apply via email to: peter.ruthlloydtrust@sky.com

The application form & supporting documents must be received by 2nd April 2024.

~~~~~  
**ELLESMERE GARDEN CLUB**

Thanks to everyone who joined us at the recent AGM - it was good to see so many members enjoying the following social and quiz. Remember membership subscriptions are now due and can be paid at the next meeting or by BACS.

We are now into the season of new talks, starting with a fascinating one lined up for **Wednesday 13 March - "People and Plants - Molecules, medicine, and mischief"** to be given by **Gwenda Kyd**. Join us in the Ellesmere Centre at 7.30 pm.

Following this, on **Wednesday 10 April** there will be a talk from **Lucy Skellorn "My family and other Foster Irises"**. This also takes place at 7.30 pm in the Ellesmere Centre.

Please do come and support these speakers who are new to our club, and remember if you have any queries you can contact Sandie on 07903 584676.

**Brinkley Parish council**

meet 5 times a year in the memorial hall at 7pm and all residents are welcome to attend.

The dates for 2024 are:

May 1<sup>st</sup>, July 17<sup>th</sup>, September 18<sup>th</sup> December 4<sup>th</sup>

All minutes and agendas can be viewed on our website [www.brinkleyparishcouncil.org.uk](http://www.brinkleyparishcouncil.org.uk) under Parish council and 'minutes and agendas'

~~~~~  
DISTRICT COUNCILLORS' REPORT

Bottisham Ward - Charlotte Cane & John Trapp

The Conservative majority on the Council's Finance & Assets Committee pushed through a recommendation to the Full Council to build their crematorium and cemetery at Mepal. John and his Liberal Democrat group colleagues on the committee voted against this for several reasons. We both feel it's a misuse of the land - which used to be an outdoor centre enjoyed by countless young people - and of £9 million of Community Infrastructure Levy funds - which could have been spent on amenities in our towns and villages. One of the stated aims of the plan for a crematorium is to have a facility in the District, and to make it more convenient for residents in East Cambridgeshire. However, Mepal is at the very edge of the District, the nearest possible location to the Council's major competitor at March, and for residents here in Bottisham it will be no more convenient than our current nearest providers.

ECSS were given a £500,000 increase to their fee for 2022/23 and 2023/24. Despite this increased fee, they are now asking for a further £200,000 for 2023/24. This will be considered by Full Council in February. Earlier this year, the Chief Executive of ECDC (who is also Managing Director of ECSS) reviewed the arrangements for ECSS and introduced various changes to address the weaknesses which he found. Charlotte proposed an external review but this was blocked by Conservative Councillors. Internal Audit have now reviewed the Governance Controls between ECDC and ECSS and found that there are gaps in the internal control framework.

The Combined Authority will be introducing a new bus service between Soham and Cambridge, via Burwell, Swaffham Prior, Swaffham Bulbeck and Bottisham. This will restore the connection with Bottisham, lost when the route for the No 11 changed. Charlotte has pressed the officers to consult locally on the details of this new service. She has also suggested that rather than going into Cambridge Centre they consult on if it should go via the Wilbrahams and Fulbourn to Addenbrookes, Long Road and Hills Road 6th form colleges and Cambridge rail station.

The Combined Authority has given ECDC £300,000 to distribute as grants to local businesses. The grant scheme will support local businesses who are looking to scale and grow within the District with capital and/or revenue grants. The scheme will target businesses from start up to a maximum turnover (2022) of

£10million. Applications open on 1 April and funds will be allocated as eligible applications are received, so businesses would be wise to get their applications ready to submit on 1 April. Details can be seen at - [UK Shared Prosperity Business Grant Scheme appendix 1 \(eastcambs.gov.uk\)](#)

Our next surgery will take place on Thursday 21 March 6.30-7.30 at Reach Village Hall. Between surgeries, residents can continue to contact us by email or phone -

charlotte.cane@eastcambs.gov.uk 07976 607512
john.trapp@eastcambs.gov.uk 07942 685599

~~~~~  
**EAST CAMBRIDGESHIRE DISTRICT COUNCIL/  
CAMBRIDGESHIRE COUNTY COUNCIL REPORT**

It's been a really busy start to the New Year. We may only be a few weeks in, but it feels like we have achieved a lot already. Firstly, I am delighted to announce we have achieved Silver accreditation from Investors in the Environment. This recognises the hard work staff and councillors put in to try and reduce our carbon footprint to help create a cleaner, greener East Cambridgeshire.

The group that runs The Hive has also achieved Gold Investors in People which is a testament to their commitment to provide a stellar service for the people of East Cambs.

The council has also awarded more than £1.76 million to community projects including The Link doctors' surgery at Stretham and announced its plans for a bereavement centre at Mepal, details of which are below. Finally, if you would like a bit of fun, please take a moment to send in your suggestions for naming our new fleet of waste and recycling vehicles. My favourite suggestion so far is Lady Ga-Garbage!

**Lakeside bereavement centre plans**

A full business plan to build a state-of-the-art ecological bereavement centre alongside a beautiful lakeside setting at Mepal has been approved by members of the council's Finance and Assets Committee. The plan for the council-owned land includes a crematorium, natural burial area, and a pet cemetery. Set within flower meadows and woodland walks with views overlooking the lake, it will give the residents of East Cambridgeshire a beautiful and peaceful setting in which to say goodbye to and remember their loved ones. The site has also been thoughtfully designed to protect and enhance the significant biodiversity and ecology that exists alongside the lake. The use of solar panels will mean it's one of the first electric cremators in the country to be powered by renewable energy. These release around 90% less carbon than a conventional gas cremator, supporting the council to meet its target to become carbon neutral by 2035. The plans will now go before Full Council on 20 February.

**Over £1.76 million for community projects**

Four projects that improve the quality of life for residents in East Cambridgeshire have been awarded over £1.76 million funding. Stretham and Wilburton Community Land Trust is to receive £1.21 million towards its Link Project. This will see the creation of a wellbeing community hub, GP rooms, café and meeting rooms at Plantation Gate. The vibrant multi-use facility will support the local community, provide an area to offer complementary therapies and ensure GP services, which have not been available in the village for some time can be delivered.

£423,107 was allocated to Witchford Parish Council to widen the existing path between Ely Road in Witchford and the A142 Lancaster Way Roundabout to create a cycleway.

£15,000 was allocated to Wilburton Parish Council towards the cost of a Multi Activity Games Area (MUGA) and tennis court on the recreation ground, subject to planning approval.

£125,000 from CIL funding to go towards a 3G artificial turf pitch at Soham Village College. This will be used by the college during term times and available for the local community to hire during evenings and weekends.

#### **Hedgehogs need help**

February is the toughest month for hedgehogs. As the weather warms, they will be heading out of hibernation having lost a third of their body weight. You can help by putting out a shallow dish of water and some food, such as cat biscuits, to help out. Find out more about what we are doing at [eastcambs.gov.uk/hedgehogrecovery](http://eastcambs.gov.uk/hedgehogrecovery)

#### **Coronation oaks for communities**

East Cambridgeshire District Council has received requests for 39 oak trees, as part of its campaign to mark King Charles III's coronation and 5th birthday. And there is still time for landowners with public access, schools, community groups, nurseries or councils to request more.

#### **Fly-tipping lowest level for 7 years**

The number of fly-tips in East Cambridgeshire has fallen to its lowest level since 2017, thanks to a multi-agency campaign. Last year 444 tips were recorded. This is a 17% fall on the 535 recorded the previous year and a 40% decline compared to 2021.

The success is the result of continued efforts under the SCRAP campaign, which launched in 2018 and involves a partnership between East Cambridgeshire District Council, the Environment Agency, surrounding local authorities and the police.

#### **East Cambridgeshire District Council/ Cambs County Council Report - February 2024**

#### **Cambridgeshire District Council**

#### **More traffic restrictions**

The GCP are now looking at road classifications throughout Cambridge, which will restrict traffic even more and, in my opinion, cause more congestion.

CCC have a stated aim of getting people out of their cars and use public transport, which is admirable, but it must come with reliable services otherwise that will not happen.

A complete rethink is required, but the ruling administration refuse to listen to constructive comments. The ruling administration voted down at a County Council meeting last year, a Conservative group proposal to have a cross party working group to look at the issues and try to resolve them. Working together for all residents. They refused that.

At the February 13<sup>th</sup> Meeting of County Council, I stated that the ruling administration continued to ignore sensible proposals from our group and seem hellbent on pushing their own ideology at the financial expense of residents, as well as ruining the City, where people are going elsewhere to shop rather than put up with the congestion.

I have ideas on how we can solve traffic issues within and outside the City and will continue to put those forward and welcome any suggestions from residents because there needs to be collaboration to get the perfect solution.

#### **Buses**

The CPCA mayor is increasing the mayoral precept by **200%** from £12 to £36 for a Band D property, which will apparently be spent on bus transport including Demand Responsive Transport, one scheme that will be in East Cambridgeshire towards the east of the district, with no change to the services within the Village Voice catchment.

There is a potential proposal to move to a franchising model, which will mean that the Combined Authority (CPCA) as the transport authority could dictate where and when buses run, rather than the bus operators, as at present.

Franchising costs a lot of money and there is no evidence that the money will be forthcoming from Government, which is the main source, based on previous poor bids that the CPCA have made.

There will be a public consultation on this later this year, once the Business Case has been published. I will update once more details are known.

#### **CCC Budget**

The CCC decided at a meeting on 13<sup>th</sup> February to increase their portion of the Council tax by 4.99%, which is the maximum allowed.

Our group put forward proposals to spend the money differently and put over £20m more into repairing our roads, but that was rejected. The County Council has nearly £300m of reserves so this was achievable.

#### **Swaffham Heath/ A1303 Crossroads - Staggered Junction**

I have some great news. After a very long wait due to legal issues purchasing land around the junction, construction is due to start on March 4<sup>th</sup> and last for 15 weeks.

This has been a long time coming, but I hope that this finally improves road safety at this important junction.

**East Cambridgeshire District Council  
ECDC Budget**

East Cambs District Council are proposing at their meeting on 20<sup>th</sup> February a NIL % increase in their portion of the Council tax. This is for the eleventh year running.

**Waste Services**

Government is looking at changing the way that waste is collected and there will be a uniform system across the country, where at the present each Council can choose their own method.

More detailed proposals will be issued over the coming months, with an implementation date likely to be 2026.

I am here to represent you, so if there are any issues that concern you, please contact me.

If I am not aware of an issue, I am not able to solve it.

**Alan Sharp Cambridgeshire County Councillor -  
Woodditton Division**

Tel: 01638 507485/ 07794292941

E-Mail: [Alan.sharp@cambridgeshire.gov.uk](mailto:Alan.sharp@cambridgeshire.gov.uk)

**ARTICLES FOR MARCH VILLAGE VOICE**

To

[villagevoicenewsletter@btinternet.com](mailto:villagevoicenewsletter@btinternet.com)

by 26<sup>th</sup> March 2024 please

**MARSH MAIL - FROM LVC**

So far this term we have seen some noteworthy successes that reflect one of our whole school values, that of having an inclusive cultural environment. It is very important to us at LVC.

Run by the Panathlon Foundation, a team from LVC took part in the Panathlon Xtend multi-skills event at Comberton Village College. The LVC team came first out of all the schools from South Cambridgeshire and will now represent South Cambridgeshire in the county finals in March.

Panathlon Xtend is a programme for children with disabilities and special needs in Key Stage 3. Research shows that disabled children's participation in sport drops off in the Key Stage 3 age groups (11 to 14-year-olds). Panathlon started Xtend programme in January 2019 to make sure they helped keep pupils active and engaged after they leave primary education. We wish our team well.

Another LVC success has been with our Dog Mentor Ralph. The Dog Mentor Programme was devised by Jenny Duckworth the Dog Mentor programme founder. The programme has built upon the 'benefits of the human-animal bond by providing children positive experiences with dogs that can help them educationally, developmentally, emotionally and socially'.

Our very special Dog Mentor Ralph won the 'You had me at hello' award this month. Ralph trained to be a Dog Mentor in the Summer of 2022 and lives with our Assistant SENCO (special educational needs coordinator) Katie Tooke. Along with Katie, Ralph also has five other Learning Support Assistant Dog Mentor Handlers. Ralph spends his Thursday's bringing positive experiences to pupils and staff alike at LVC. Asking Katie what is so special about Ralph, she said 'it's the smile he puts onto pupil's faces, it's absolutely priceless!'

For more information on the Panathlon Foundation visit [Panathlon.com](http://Panathlon.com). And for more information on the Dog Mentor Programme visit [thedogmentor.co.uk](http://thedogmentor.co.uk).



**RECTOR**

**Rev'd Patrick McEune**

email address: [frpatrick@btinternet.com](mailto:frpatrick@btinternet.com)

Telephone number: 07411 761883

**CHURCHWARDENS:**

**Burrough Green:** Lucy Talbot Tel: 01638 507060,  
email: [peterandlucyt@btinternet.com](mailto:peterandlucyt@btinternet.com)

**Westley Waterless:** Ms. Deborah O'Riordan, Tel:  
01638 507741, email [d.a.oriordan@btinternet.com](mailto:d.a.oriordan@btinternet.com)  
and Mrs Liz Gibson, Tel: 01638 508600,  
[lizgibson@me.com](mailto:lizgibson@me.com)

**Brinkley:** Ros Pates 01638 507240  
[rospates@yahoo.co.uk](mailto:rospates@yahoo.co.uk)

**Carlton:** Stephen Roberts 01223 290372 or  
[Stephen.roberts28@btopenworld.com](mailto:Stephen.roberts28@btopenworld.com).

**RURAL DEAN**

Rev'd Canon Dr. Eleanor Williams

Vicar of Burwell with Reach

Rural Dean of Fordham and Quy Deanery

The Vicarage, 22 Isaacson Road: Burwell, CB25 0AF

Telephone: 01638 741262.

Email: [vicar@stmarysburwell.org.uk](mailto:vicar@stmarysburwell.org.uk)

**CATHOLIC PARISH SERVICES:**

Newmarket: Saturdays 6pm & Sundays 11am

Kirtling: Sunday 9am.

For a full list of weekday services, the newsletter & other information please visit the website.

<http://www.olise.co.uk/wordpress/>



**SERVICES FOR MARCH**

**Sunday 3<sup>rd</sup> March**                      **3<sup>rd</sup> Sunday of Lent**  
 9.00 am Holy Communion              Brinkley  
 10.30 Family Service                      Burrough Green  
*Exodus 20: 1-17 1 Corinthians 1: 18-25 John 2 12-22*

**Sunday 10<sup>th</sup> March**                      **Mothering Sunday**  
 9.00 am Holy Communion              Stetchworth  
 10.30 am Morning Prayer              Dullingham  
*Exodus 2: 1-10 2 Corinthians 1: 3-7 Luke 2: 33-35*

**Sunday 17<sup>th</sup> March**                      **5<sup>th</sup> Sunday of Lent**  
 9.00 am Holy Communion              Burrough Green  
 10.30 am Morning Prayer              Brinkley  
*Jeremiah 31: 31-34 Hebrews 5: 5-10 John 12: 20-33*

**Sunday 24<sup>th</sup> March**                      **Palm Sunday**  
 10.30 am Holy Communion              Dullingham  
 3.00 pm Evensong                          Stetchworth  
*Liturgy of the Palms - Mark 11: 1-11*

**Monday 25<sup>th</sup> March**    7 pm Dullingham **Compline**  
**Tuesday 26<sup>th</sup> March**    7 pm Dullingham **Compline**  
**Wednesday 27<sup>th</sup> March** 7 pm Dullingham **Compline**

**Thursday 28<sup>th</sup> March**                      **Maundy Thursday**  
 7.00 pm Holy Communion              Dullingham  
*Exodus 12: 1-4 (5-10) 11-14 1 Corinthians 11: 23-26*  
*John 13: 1-17, 31b - 35*

**Friday 29<sup>th</sup> March**                      **Good Friday**  
 7.00 pm                      Joint service with URC at St Peter's

**Sunday 31<sup>st</sup> March**                      **Easter Sunday**  
 10.30 am Benefice Communion        Westley Waterless  
 10.30 am Lay-led Family Service      Burrough Green

\*\*\*\*\*

**FROM THE RECTORY**

Ash Wednesday was the start of Lent. The distinctive English word "Lent" is derived from the Anglo-Saxon word for "spring", because Lent always falls in the springtime. Notwithstanding the fact that autumn occurs at this time in the southern hemisphere, the English word has the advantage over the Latin words based on "quadraginta" or "forty" because it calls to mind the new life, growth, hope and change that should characterise this time of prayer, penance and conversion; this season of initiation into the grace life of the Church. The Lent fast of forty days chiefly commemorates that of Jesus when He went into the wilderness to pray. After He had fasted for forty days and forty nights, He was tempted by the Devil, but overcame the temptations. The forty days extend from Ash Wednesday to Easter Eve, leaving out the Sundays, which are not fast days. We can use the time of Lent to reflect and pray. We could still join

the Lent Group or why not come to the Mothering Sunday Service at 10.30 at St Mary's Dullingham  
 Go well  
 Fr Patrick  
*Reverend Patrick J McEune Rector of The Benefice of Raddesley Group of Parishes:*

\*\*\*\*\*

\*\*\*\*\*

**RADDESLEY BENEFICE WEBSITE**

On the website you can find out more about our churches, services, what's on and useful information about baptisms, funerals and weddings; [www.raddesley.com](http://www.raddesley.com)

\*\*\*\*\*